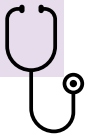


Recommendations for Hepatitis C Screening and Treatment in People Who Use Drugs

Test people who use drugs (PWUD) for Hep C at least annually

TEST TYPE	TEST RESULT	
	If positive (+)	If negative (-)
Antibody Test: Use to test people who have never tested Hep C positive.	Confirm with RNA Test (Reflex RNA testing is ideal)	Retest in 12 months with antibody test
RNA Test: Use to test people who have ever tested Hep C positive.	Link to Hep C medical care	Retest in 12 months with RNA test



All PWUD with Hep C should be evaluated for treatment

- Hep C is treated with oral medications in 8–12 weeks with few side effects. See the algorithm for the management and cure of Hep C infection at www.bit.ly/simplified-hepc.
- Over 90% of PWUD with Hep C who are treated achieve a cure, less than 5% get reinfected.
- Curing Hep C prevents ongoing transmission to drug-sharing and sexual partners.
- Patient-centered care practices including Hep C patient navigation can help PWUD get care and complete treatment. To find a program, visit: _____



Health Insurance approves Hep C medications for PWUD

- [add a sentence about your locality's insurance requirements]
-

- Specialty pharmacies can support the medication prior authorization process.
- Local resource for prior authorization appeals and applications (legal aid, attorney general, state medicaid office)



Prevent Hep C and Overdose

- Link people to harm reduction and syringe service programs <https://nasen.org/map/>
- Link people to medication-assisted treatment, such as buprenorphine [SAMHSA bupe locator](#)
- Provide Naloxone <https://nextdistro.org/naloxone> and prevention tips www.bit.ly/opioid-overdose-basics

Resources

- To find Hep C patient navigation programs and programs for uninsured visit: _____
- Clinical Education Initiative (CEI) Hepatitis C and Drug User Health Center of Excellence: www.ceitraining.org
- American Association for the Study of Liver Disease - Identification and Management of Hepatitis C in People Who Inject Drugs: hcvguidelines.org/unique-populations/pwid
- For more information email: HepProgram@state.gov